

Vulnerability Management Managed on-Prem

The Tenable.sc™ platform provides the most comprehensive and integrated view of enterprise security posture so you can accurately identify, investigate and prioritize vulnerabilities.

Tenable.sc is a vulnerability management solution that provides visibility into your attack surface so you can manage and measure your cyber risk. Through advanced analytics, customizable dashboards, reports and workflows, you can understand your risk and know which vulnerabilities to fix first.

Built on leading Nessus technology, Tenable.sc gathers and evaluates vulnerability data across multiple Nessus® scanners distributed across your enterprise and illustrates vulnerability trends over time to assess risk and prioritize vulnerabilities. Finally, Tenable.sc includes a configurable workflow engine that helps your security team speed up response and remediation, to reduce overall risk and streamline compliance.

Tenable.sc includes Predictive Prioritization, which combines data and threat intelligence across multiple sources, and analyzes them all with a data science algorithm that uses machine learning to anticipate the probability of a vulnerability being leveraged by threat actors. You get real-time insight to help you prioritizing patching and understand which vulnerabilities to remediate first.

Key Benefits

- Identify weaknesses by scanning network connected assets for known vulnerabilities, misconfigurations and malware
- Prioritize vulnerabilities with the greatest impact and understand the likelihood a given vulnerability will be exploited in the next 28 days
- Focus on what matters most by quickly identifying what patches to prioritize for the biggest risk reduction.
- Rapidly respond to changes with configurable alerts, notifications and automated actions
- Streamline compliance for the widest range of regulatory/IT standards and best practices

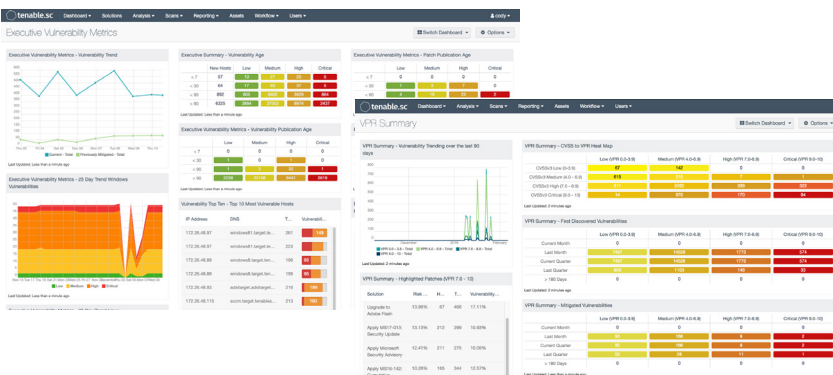


Figure 1: Highly customizable dashboards, reports, workflows and security policies to suit your specific business needs.

Predictive Prioritization

Tenable.sc CV includes Predictive Prioritization, which combines data and threat intelligence across multiple sources, and analyzes them all with a data science algorithm that uses machine learning to anticipate the probability of a vulnerability being leveraged by threat actors. You get real-time insight to help you prioritize patching and understand which vulnerabilities to remediate first for the greatest risk reduction.

Tenable Research

Tenable.sc is back by Tenable Research, delivering world-class Cyber Exposure intelligence, data science insights, alerts and security advisories. Frequent updates from Tenable Research ensure the latest vulnerability checks, zero-day research, and configuration benchmarks are immediately available to help you secure your organization.

Key Features

Vulnerability Priority Rating: combines threat intelligence and machine learning to determine the likelihood a vulnerability will be exploited in your unique environment.

Lumin: Calculate and manage cyber risk across your organization, and see how you stack up against the competition with the Tenable.sc and Lumin integration.

Highly customizable dashboards/reports: HTML-5 based user interface satisfies the specific needs of CISOs, security management, analysts and practitioners/operators.

Broad asset coverage: assess servers, endpoints, network devices, operating systems, databases and applications in physical, virtual and cloud infrastructures.

Continuous asset discovery: discover all mobile devices, physical, virtual and cloud instances on the network, including unauthorized assets.

Dynamic asset classification: group assets based on policies that meet specific criteria: e.g., Windows 7 assets with vulnerabilities > 30 days old.

Tenable.sc Director Integration: Single-pane-of glass to manage and view your network across multiple consoles.

Vulnerability management: multiple scanning options, including passive network monitoring, non-credentialed and credentialed scanning for deep analysis and configuration auditing.

Agent-based scanning: available for organizations to more easily scan mobile and hard to reach assets.

Malware detection: leverage built-in threat intelligence feeds (malware indicators, blacklists) to identify advanced malware.

Assess network health: continuously monitor network traffic looking for suspicious traffic to/from vulnerable systems/ services, unknown devices, botnets, command/control servers.

Anomaly detection: use statistical and anomalous behavior analysis techniques on external log sources, to automatically discover activity that deviates from the baseline.

Advanced analytics/trending: provide contextual insight and actionable information to prioritize security issues associated with security posture of all enterprise assets.

Notification: configurable alerts for administrators to take manual actions via emails, notifications, trouble tickets or to take automated actions via APIs.

Streamlined compliance: pre-defined checks for industry standards and regulatory mandates, such as CERT, DISA STIG, DHS CDM, FISMA, PCI DSS, HIPAA/HITECH and more.

Integrations: use out-of-box integrations with patch management, mobile device management, threat intelligence and other third-party products, or use Tenable.sc APIs to develop custom integrations.



Tenable.sc Editions



Tenable.sc is a next-generation vulnerability analytics solution. Built on leading Nessus technology, you get a comprehensive view of your network so you can discover unknown assets and vulnerabilities, prioritize vulnerabilities and monitor network changes before they turn into a break.



Tenable.sc Continuous View is a market-leading vulnerability management platform. It integrates Tenable.sc with multiple Nessus Network Monitor sensors and network traffic and event monitoring to provide continuous monitoring and real-time asset discovery and vulnerability detection.

Capabilities		
Centralized vulnerability management with multiple scanners	●	●
Dynamic asset classification (mail server, web server, etc.)	●	●
Policy-based configuration auditing	●	●
Malware detection with built-in threat Intelligence	●	●
Pre-defined dashboards/reports with automatic feeds from Tenable	●	●
Incident response with configurable alerts, notifications, ticketing	●	●
Assurance Report Cards (ARCs)	●	●
Vulnerability Priority Rating (VPR)	●	●
Integration with Tenable.sc Director	●	●
Integration with Tenable Lumin	●	●
Continuous asset discovery (virtual, mobile, cloud)		●
Passive vulnerability detection of new and "unsafe-to-scan" assets		●
Real-time detection of botnet and command & control traffic		●
Anomaly detection using statistical/behavioral techniques		●
Streamlined compliance with proactive alerts on violations		●



AUTORYZOWANY PARTNER FIRMY TENABLE
W POLSCE

Passus S.A. | ul. Goraszewska 19 | 02-910 Warszawa
tel. +48 695 444 803 | e-mail: passus@passus.com
www.passus.com

For More Information: Please visit tenable.com