

Integrated **Active Directory**, **Exchange** and **Office 365** management

- One-click AD, O365, and Exchange user creation
- Bulk management of AD objects via CSV import
- 200+ pre-packaged, actionable reports
- Automation for routine tasks such as AD cleanup
- OU-based help desk delegation
- Template-based user provisioning
- Protect against data loss disasters with AD backup and recovery
- Integration with popular SIEM, HR management, and helpdesk software.
- iOS and Android mobile apps, and much more!

Freedom from PowerShell scripting!

The Active Directory management challenge

Every IT administrator faces the challenge of managing Active Directory objects including users, groups, computers, OUs, and more almost every day. But manually performing these complex tasks, such as configuring user properties, is extremely time consuming, tiresome, and error-prone—especially in a large, intricate Active Directory enterprise. What if you could automate these cumbersome tasks, simplify AD management, and provide exhaustive reports on the status of various tasks? We think that sounds pretty nice.

Introducing ADManager Plus

ADManager Plus comprehensively manages AD, Exchange, Office 365, Skype for Business (Lync), and Google Apps. It is entirely a web-based solution that manage AD objects, Exchange mailboxes, Office 365 licenses, and more in bulk. It also generates predefined reports on those environments, all with purely GUI-based actions. Its numerous features include help desk delegation, workflow, automation, and more to make AD management a breeze.

“

We evaluated ScriptLogic Active Administrator, Quest AD management tool and ADManager Plus to solve our day-to-day AD management & reporting needs. ADManager Plus with its high-end features and low-end cost was an obvious choice.

”

Meraz Nasi,
Manager of Infrastructure (ITS),
Interfaith Medical Center,
New York, United States.

ADManager Plus is available in two editions:

- Standard
- Professional

Management

- Create users in AD, Exchange, Office 365, Google Apps, and Skype for Business (Lync) in a single step.
- Create or modify AD objects (users, groups, contacts, OUs, and computers) in bulk via CSV import.
- Perform AD tasks such as password reset, account unlock, clean up, and more.
- Streamline the management of AD objects such as users and OUs with customizable templates.
- Assign, replace, or revoke Office 365 licenses in bulk.
- Manage shared, remote, room, and equipment mailboxes.
- Create backups of AD objects and restore all attributes of an object or only specific attributes.

Reporting

- Generate and schedule more than 200 preconfigured, granular reports on AD, Exchange, Office 365, and Google Apps.
- View inactive users, locked out users, disabled computers, and more in just few clicks.
- Create custom AD reports to obtain the exact data that you require.
- Export to a number of formats including HTML, PDF, XLS, XLSX, CSV, and CSVDE.
- Mention specific users or computers in a CSV file for generating their important details.
- Generate compliance reports to meet regulatory standards such as SOX, HIPAA, and more.

OU and role-based help desk delegation

- Granularly delegate AD, Office 365, and G-Suite tasks to help desk technicians for specific OUs.
- Delegate tasks such as resetting passwords, creating users, and more.
- Delegate without elevating technicians' privileges in Active Directory

AD automation and workflow

- Automate routine Active Directory tasks such as AD clean up.
- Configure a review-approval workflow to execute AD tasks with a structured flow.
- Exercise control over automated tasks by using workflow with automation.

iOS and Android Apps

- Manage users from anywhere- Reset passwords; unlock, enable, disable and delete accounts.
- View reports on locked out, disabled, password, expired and inactive users.
- View, manage, and execute AD workflow requests.

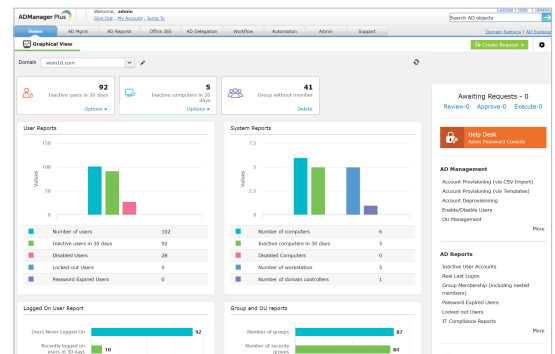
“

With ADManager Plus, we can run reports to make sure that we are staying within the compliance guidelines between audits. ADManager Plus helps us take some of the edge off SOX compliance, and since the purchase we have received good SOX reviews.

”

Brian Seka,
MicroComputer Analyst,
Marmon/Keystone Corporation,
Butler, Pennsylvania.

Customizable Dashboard



System Requirements

Processor: 1.6 GHz or faster.

RAM: 1 GB.

Disk space: 4 GB.

Supported Windows OS versions:
2019, 2016, 2012 R2, 2012, 2008 R2
2008, 10, 8.1, 8, 7

Supported browsers:

Internet Explorer 10 and above
Microsoft Edge
Google Chrome
Mozilla Firefox



AUTORYZOWANY PARTNER FIRMY MANAGE ENGINE W POLSCE

Passus S.A. | ul. Goraszewska 19 | 02-910 Warszawa
tel. +48 695 444 803 | e-mail: passus@passus.com
www.passus.com